

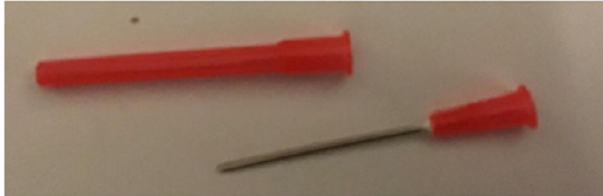
Optrekspuiten. Links BD, rechts MLS

BD Emerald Syringe, 3 ml LS ref 302986
SOL-M luer lock syringe, 3ml LSM180003



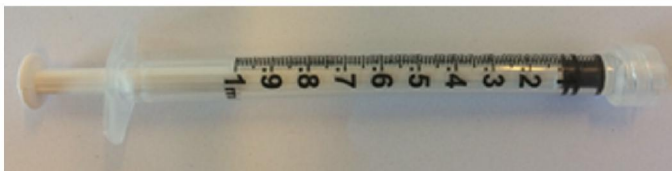
Optrekenaalden (foto 1 BD, foto 2 MLS)

BD Blunt Fill needle 18Gx1 1/2" ref 303129
Sol-M blunt fill needle 18G1, LSM110022



Toedieningsspuiten (BD foto 1, MLS foto 2)

BD Plastipak Syringe, 1 ml LS ref 303172
Sol-M luer lock syringe, 1ml LSM180001PP



Toedieningsspuiten (foto 1 BD, 2 MLS)

BD Eclipse needle 23G x 1# ref 305892

Sol-Care safety needle, 23G x 1" LSM2310

